



RocketPort® INFINITY and EXPRESS 16-Port Rackmount Interface

Part Number: 30055-7

ROCKETPORT

KEY FEATURES AND BENEFITS

- Compatible with RocketPort INFINITY and EXPRESS 16-Port Serial Cards
- Standard 1U 19" Rackmounting
- RS-232/422/485 Software-Selectable Ports
- Communications Speeds up to 460Kbps
- RoHS2 compliant under CE



PRODUCT DESCRIPTION

Flexible, reliable and high-speed multipoint serial expansion. The next generation RocketPort 16-Port Rackmount Interface delivers 16 RJ45 connections that can be configured for RS-232, RS-422 or RS-485 serial communications and mounts in a standard 1U 19" IT equipment rack. This product is only suitable for use with the

RocketPort INFINITY PCI-X and RocketPort EXPRESS PCIe products and is not compatible with previous RocketPort ISA, PCI, or uPCI products.



ROCKETPORT SPECIFICATIONS

HARDWARE

Dimensions	16.75" x 1.75" x 8"
Product Weight	89.3 oz
Packaged Shipping Weight	89.92 oz
Enclosure	Black Finished Steel

ELECTRICAL SPECIFICATIONS

Surge Protection	15KV @200A for 1ns
-------------------------	--------------------

ENVIRONMENTAL SPECIFICATIONS

Air Temperature	
System On	0° to 60°C
System Off	-20° to 85°C
Operating Humidity	
	5% to 95%
Altitude	
	0 to 10,000 feet
Mean time between failures (MTBF)	
	61.3 years

SERIAL COMMUNICATIONS

Port Communication	(16) RJ45F
Software Interfaces	RS-232/422/485
Baud Rate	300bps-460.8Kbps

DEVICE DRIVERS

(Determined by RocketPort Card)
 FreeBSD 5
 FreeBSD 6
 QNX® 6.X
 SCO OpenServer™ 5
 SCO OpenServer™ 6
 Linux
 Microsoft® Windows® 7
 Microsoft® Windows® 2008 Server
 Microsoft® Windows® Vista
 Microsoft® Windows Server® 2003
 Microsoft® Windows® XP
 Microsoft® Windows NT® 4.0 (Legacy)
 Microsoft® Windows® 2000 (Legacy)

FEATURES

RoHS 2 compliant under CE
 Rugged metal housing
 Easy Setup
 5 Year Warranty

REGULATORY APPROVALS

Emissions
 Canadian EMC Requirements ICES-003
 European Standard EN55022
 FCC Part 15 Subpart B: Class A limit
 AS/NZS CISPR 22

Immunity
 European Standard EN55024
 IEC 1000-4-2/EN61000-4-2: ESD
 IEC 1000-4-3/EN61000-4-3: RF
 IEC 1000-4-4/EN61000-4-4: Fast Transient
 IEC 1000-4-5/EN61000-4-5: Surge
 IEC 1000-4-6/EN61000-4-6: Conducted Disturbance
 IEC 1000-4-8/EN61000-4-8: Magnetic Field
 IEC 1000-4-11/EN61000-4-11: Dip and Voltage

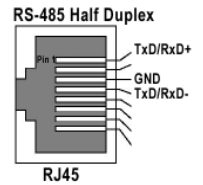
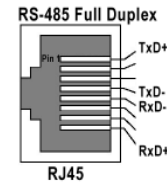
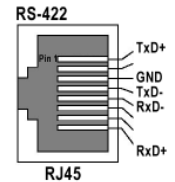
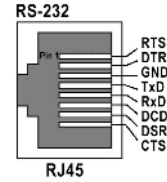
Safety
 IEC 60950/EN60950 (LISTED)
 CSA C22.2 No. 60950/UL60950 Third Edition

Other
 RoHS2 Compliant

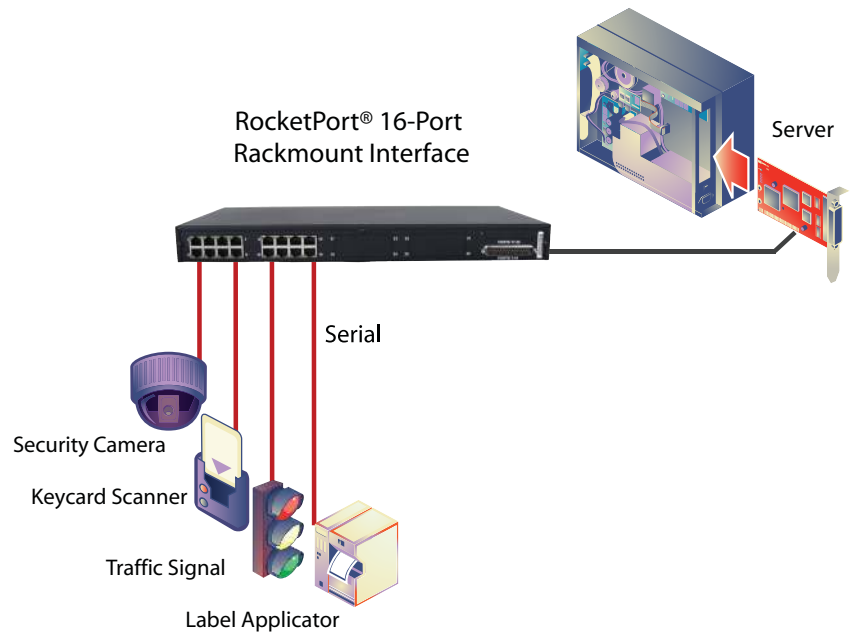
Regulatory Approvals



PINOUTS



RocketPort® 16-Port Rackmount Interface



Warranty Information

Control offers a 30-day satisfaction guarantee and 5-year limited warranty.

Sales Support

+1.763.957.6000
 sales@comtrol.com

Technical Support

+1.763.957.6000
 www.comtrol.com/support

Email, FTP, and Web Support

info@comtrol.com
 ftp.comtrol.com
 www.comtrol.com